

CCL Cable clamps / cable clips

for C section rails C30



The cable clamps are characterised by a high clamping range and great flexibility. Ideally suited for strain relief on the C section rail C30 with opening dimensions 16 - 17 mm. It offers flexible clamping ranges from 6 mm to 64 mm. The counter tray is secured by a locking mechanism and cannot slip out of the cable clamp.

Also available: sets consisting of [EMC shield clamp LFC](#) and matching [CCL cable clip](#).

RoHS
compliant

REACH
COMPLIANCE

Specifications

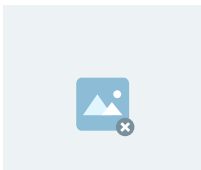
Material	Mild steel, galvanically zinc plated
Properties	vibration proof
Mounting options	Clamping

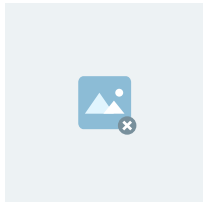
Advantages & benefits

- Quick and easy assembly
- For mounting on all common C30 rails with 16 - 17 mm opening dimensions

Product types & sizes

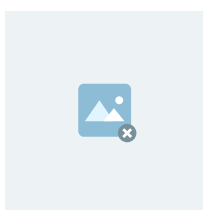
CCL 6-13	Part No.	32000	Clamping range	1 x 6 - 13 mm
	EAN	4251269323577		
	Package quantity	25		
	Length	24 mm		
	Width	19 mm		
	Height	31 mm		
	Mounting height	51 mm		

CCL 12-19	Part No.	32001	Clamping range	1 x 12 - 19 mm
	EAN	4251269323584		
	Package quantity	25		
	Length	24 mm		
	Width	22 mm		
	Height	36 mm		
	Mounting height	56,7 mm		

CCL 18-23

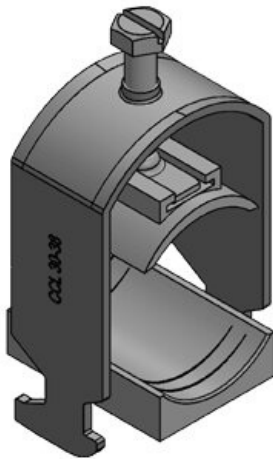
Part No. **32002**
 EAN **4251269323591**
 Package quantity **25**
 Length **24 mm**
 Width **26 mm**
 Height **38 mm**
 Mounting height **62 mm**

Clamping range **1 x 18 - 23 mm**

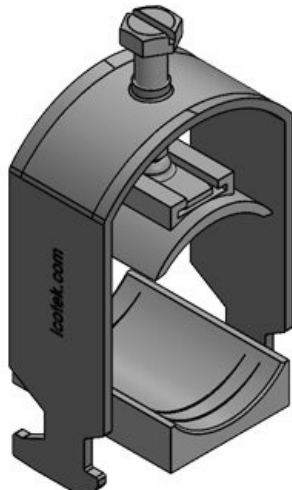
CCL 22-32

Part No. **32003**
 EAN **4251269323607**
 Package quantity **25**
 Length **24 mm**
 Width **38 mm**
 Height **52 mm**
 Mounting height **72 mm**

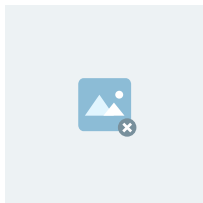
Clamping range **1 x 22 - 32 mm**

CCL 30-38

Part No. **32004** Clamping range **1 x 30 - 38 mm**
 EAN **4251269323614**
 Package quantity **25**
 Length **24 mm**
 Width **44 mm**
 Height **62 mm**
 Mounting height **78 mm**

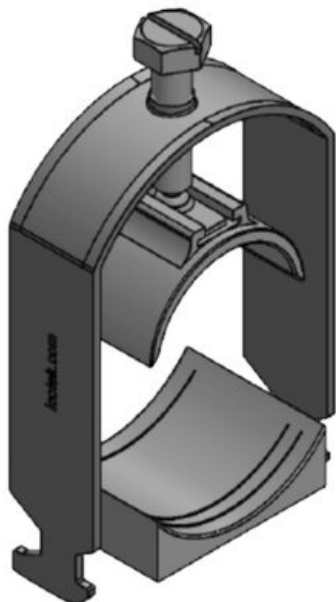
CCL 38-42

Part No. **32005** Clamping range **1 x 38 - 42 mm**
 EAN **4251269323621**
 Package quantity **25**
 Length **24 mm**
 Width **48 mm**
 Height **67 mm**
 Mounting height **82 mm**

CCL 42-50

Part No. **32006**
EAN **4251269323638**
Package quantity **25**
Length **24 mm**
Width **55 mm**
Height **83 mm**
Mounting height **101 mm**

Clamping range **1 x 42 - 50 mm**

CCL 50-64

Part No. **32007** Clamping range **1 x 50 - 64 mm**
EAN **4251269323645**
Package quantity **25**
Length **24 mm**
Width **69 mm**
Height **98 mm**
Mounting height **116 mm**